

Rachél Watkins Rogers

Zoological Consultant / Retired Registrar



**Animal Transport During an
Emergency.
What's your response?**

We are all alike...we all have flora and fauna in our facilities.

We are all different...we do not have the same taxa or facilities.

We are both all at the same time...this presentation is an overview of responses needed for various types of emergency transport.

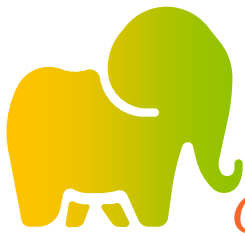
You may be a large, small, municipal 'public', corporation, private-public partnership, or privately overseen institution, so please use what applies to you in this presentation!

**ASSOCIATION
OF ZOOS &
AQUARIUMS**



ZOOLOGICAL ASSOCIATION
OF AMERICA





Zoological Associations

Common focus about emergency transport...

Association of Zoos and Aquariums (AZA) – Primarily focuses on procedures, training staff, backup systems, and mentions transport during emergencies.

Multidisciplined approach to emergencies and maintain regulatory compliance.

Zoological Association of American (ZAA) - Focuses on similar topics as AZA in a simplified organization with less details and maintain regulatory compliance.

Association of Zoo Veterinarians (AAZV) – Focuses on medical emergencies and medical response to emergencies and maintain regulatory compliance.

AAZV is now the umbrella for the ZAHP (Zoo All Hazards Partnerships).

Zoological Registrars Association (ZRA) – Previously used ‘Safe Haven’ program as support for institutions after disasters for registrar-to-registrar liaising to communicate about animal collection to zoo professionals. Role that implements a records protection program for natural disasters and protection of records of all types (Applies to accreditation of AZA, ZAA, local government, and federal regulatory agencies (e.g., USDA, USFWS, Port Inspectors, etc.) legal records retention policies).

What do they have to do with Animal Transport?

1. AZA, ZAA are professional organizations that set standards for oversight of transport by institutions.
2. AAZV is involved with the medical management of animals before/during/or after transport.
3. ZRA and records keepers manage the legal documents authorizing animal transport.





Types of Emergencies

What should your response be?

i. Natural Disaster/Emergency

- i. Implement Contingency Plan or appropriate plan
- ii. Protect records, permits, and legal documents
- iii. Life-support backup systems in place before (electric, water)
- iv. Determine if transport is required

ii. Medical Emergency/ Foreign Animal Disease/ Pandemics

- i. FAD may require off-exhibit holding or transfers
- ii. May require a change to current shipment dates

iii. Human Disaster / Confiscations

- i. Rare but can be part of a police investigation
- ii. Identifiers required and proof of ownership
- iii. Determine post event disposition if animal stays
- iv. Coordinate transport through law enforcement

iv. Evacuations/ Recovery of escapees

- i. Identification of individuals
- ii. Proof of ownership
- iii. Keep a journal for later entry into records
- iv. **Coordinate ALL through your registrar!!!**

What is an Animal Transport?

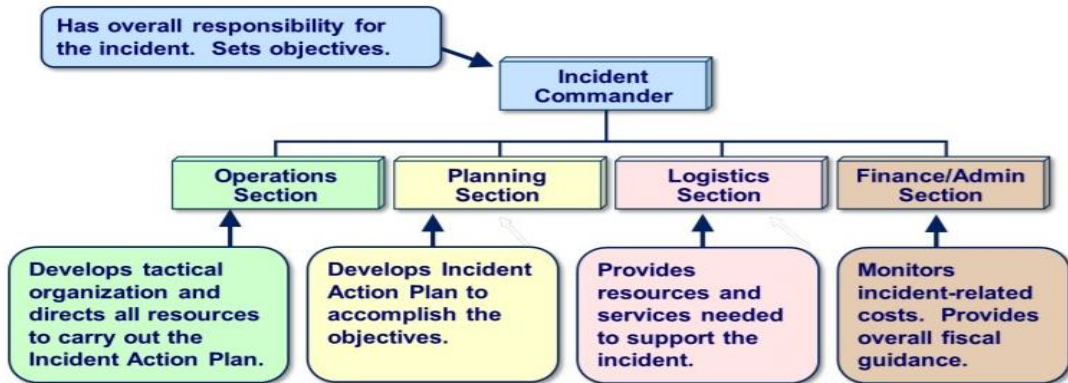
1. Ambassador animal to school?
2. Transfer in the zoo to change exhibits?
3. Ship to another zoo or aquarium?
4. Take to vet clinic or pick up from airport?
5. ALL of the above? **YES**



Communication is dependent on size/duration of event...

The larger or longer the event more streamlined!

ICS – Who Does What?



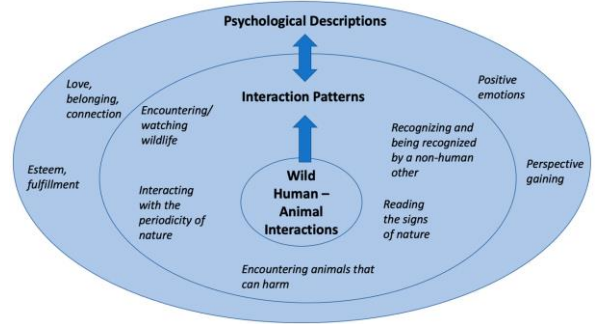
Hurricane Irma lasted for days, and the response lasted for months, but the recovery lasted for years. Communication had to be streamlined!

“Administrative” (əd'minə, strādiv, əd'mini, strədɪv)

Administration allows the emergency team to be able to work, support office and communication, staff travel and logistics, compliance with wildlife regulations, and be a liaison for local wildlife agency coordination."

Who coordinates self care and checks in on stress levels?

Staff roles responsible for certain duties.



Ukraine war: Kyiv zookeepers are lighting fires to keep their animals warm



It is a constant challenge for Tony's zookeepers to keep them warm. Copyright: REUTERS/Shea Sakash

**Hungry
Angry
Lonely
Tired**

They can't rescue you if they don't know you need it. Ask for help to fight another day.



Suicide Prevention Quotes
www.geckoandfly.com





Animal Transport Logistics

Before/ During/ and after Transport



Be prepared before emergency transport...with contingency plans, staff training, accessible crate storage, and legal documents in place.



Why a Registrar?

*Documentary needs
coordinator.*

The registrar's role is to manage of a wide variety of records, including permits and various types of legal documents.

Their role facilitates animal/vet staff in dealing with logistics, or internal/external communication relative to animal transport.

Zoo registrars can coordinate notifications, document logistics, and can be a conduit your first responder team relies on to free their time for more immediate concerns.

Registrar [rej-uh-strahr, rej-uh-strahr]



a person who keeps a record; an official recorder.



Emergency Transactions (Terms)

Ownership, Responsibilities, Legalities and Assurances.

Who is responsible or legally bound in agreements?

- Check wildlife laws or permits for responsibilities
- Lawful Owner for Transfer of Ownership
- Sender (Consignor) / Recipient (Consignee)
- Transporter / Broker / Freight Forwarder
- Agreements should name who is the responsible party
- Authorized Signatory versus Institutional Staff

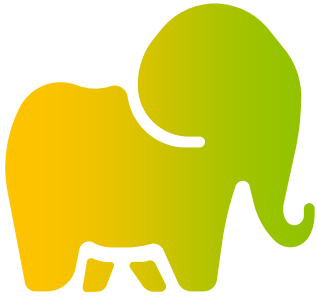
Know who is accountable for anything in the event of an emergency, death in transit, or issues of any kind for your staff or animal(s) during transport.

Do your transaction documents include terms for emergencies?

legality[lee-gal-i-tee]



The quality or state of being in accordance with the law; lawfulness.



The Devil is in the Details

Logistics and coordination with staff, transporter, and recipient.

Who is Doing What, Where, When, and How?

- Registrar Role
- Animal Management Roles
- Veterinarian Role
- Transporter Role
- Animal Keeper Roles
- Animal Attendants in Transit



It is important to have a coordinated process to avoid issues, lack of proper paperwork or a permit, refusal of carriage of your animal, or fatalities in transit.

Do you have a well-defined process with a checklist for roles of your shipping team?

lo·gis·tics [/'lə'jɪstɪks/]

the detailed coordination of a complex operation involving many people, facilities, or supplies.



Questions to Rachél

Type your questions in the chat box.



Thank you! ¡Gracias!

Merci! Obrigado!

Dōmo arigatō (共 ありがとう)