



Contingency Rule Planning and Animal Transport

May 24, 2023

Objectives

Background

Requirements

Resources



Hurricane Katrina (2005)



§ 2.134 Contingency planning

Provide for the humane care of their animals in the event of an emergency or disaster (one which could reasonably be anticipated and expected to be detrimental to good health and well-being)

Objectives

Background

Requirements

Resources



Planning Must Answer the 4 Questions

When

Identify situations the licensee or registrant might experience that would trigger the need for the measures identified in a contingency plan to be put into action including, but not limited to, emergencies such as electrical outages, faulty HVAC systems, fires, mechanical breakdowns, and animal escapes, as well as natural disasters most likely to be experienced;

What

Outline specific tasks required to be carried out in response to the identified emergencies or disasters including, but not limited to, detailed animal evacuation instructions or shelter-in-place instructions and provisions for providing backup sources of food and water as well as sanitation, ventilation, bedding, veterinary care, etc.;

Who

Identify a chain of command and who (by name or by position title) will be responsible for fulfilling these tasks; and

How

Address how response and recovery will be handled in terms of materials, resources, and training needed.

(from § 2.134)

When?

§ 2.134(a)(1) Identify situations the licensee or registrant might experience that would trigger the need for the measures identified in a contingency plan to be put into action including, but not limited to, emergencies such as electrical outages, faulty HVAC systems, fires, mechanical breakdowns, and animal escapes, as well as natural disasters most likely to be experienced;

What?

§ 2.134 (a)(2) Outline specific tasks required to be carried out in response to the identified emergencies or disasters including, but not limited to, detailed animal evacuation instructions or shelter-in-place instructions and provisions for providing backup sources of food and water as well as sanitation, ventilation, bedding, veterinary care, etc.;

Who?

§ 2.134 (a)(3) Identify a chain of command and who (by name or by position title) will be responsible for fulfilling these tasks; and

A photograph of a herd of elephants in a savanna. One elephant is in the foreground, partially submerged in a watering hole, with its trunk extended. Other elephants are visible in the background. The scene is set in a natural, open landscape with scattered trees under a clear sky.

How?

How will you do it successfully?

§ 2.134 (a)(4) Address how response and recovery will be handled in terms of materials, resources, and training needed.

Training on roles and responsibilities



§ 2.134(c)

Rule Summary

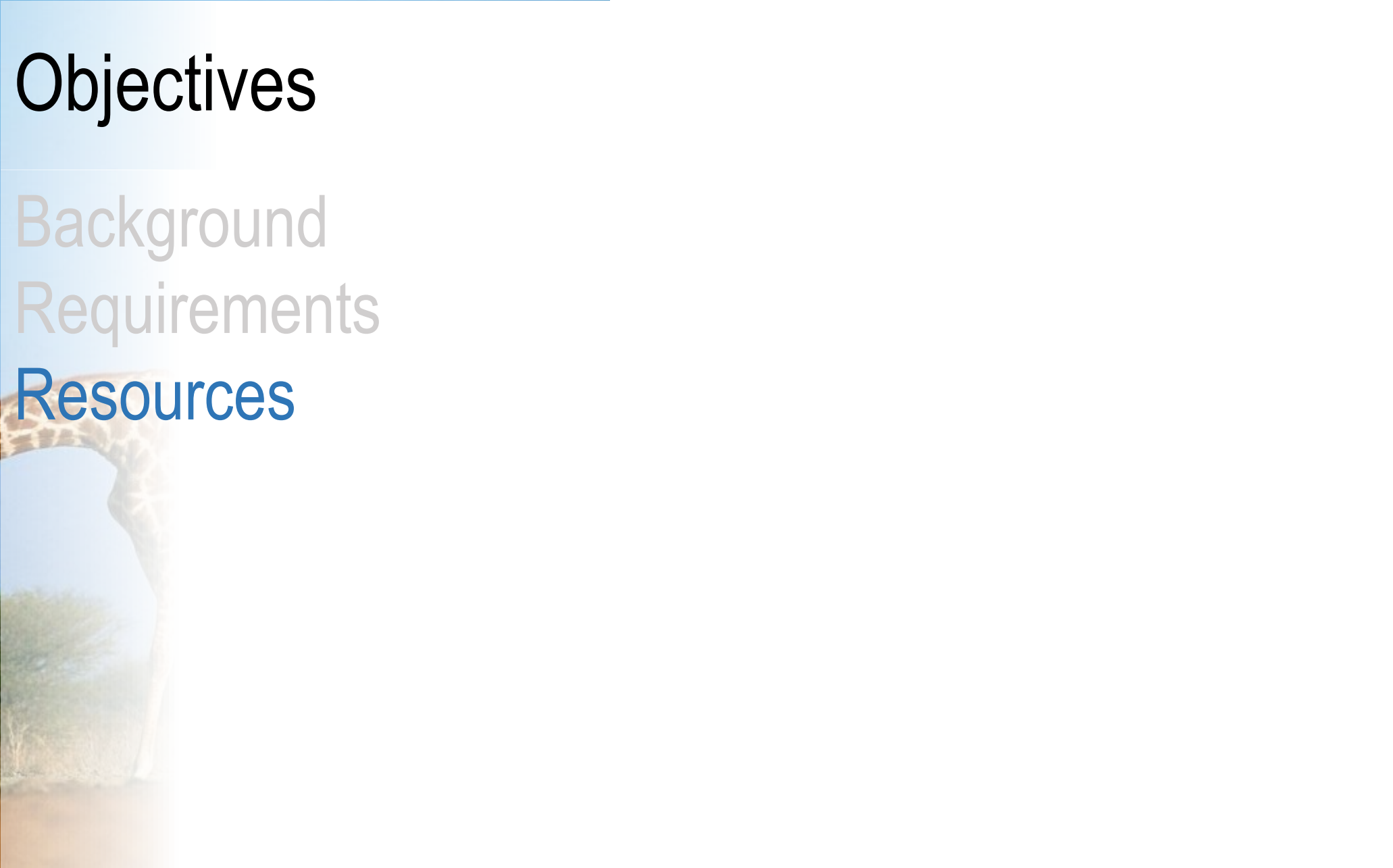
- Plan is available for inspection (plans available at all sites, vehicles in fleet),
- Entities review plan annually, and document review and interim modifications,
- Training must be provided to new employees within 30 days of hire and all employees within 30 days of plan revisions

Objectives

Background

Requirements

Resources





Optional Form APHIS 7093

SECTION I. ESTABLISHMENT OF CONTINGENCY PLANNING PROGRAM

1. LICENSEE/REGISTRANT NAME

6. SITE NUMBER

2. BUSINESS NAME

3. USDA LICENSE/REGISTRATION NUMBER

7. HOME TELEPHONE

4. STREET MAILING ADDRESS

8. BUSINESS TELEPHONE

5. CITY, STATE, AND ZIP CODE

9. EMAIL ADDRESS





Resources

<https://www.aphis.usda.gov/aphis/ourfocus/animalwelfare/new-contingency-planning-rule/aphis-2020-0101>



[Home](#)

[Our Focus](#) ▾

[Resources](#) ▾

[Newsroom](#) ▾

[Pet Travel](#)

[Blog](#)

Search APHIS



USDA FAQ's and resources about coronavirus (COVID-19). [LEARN MORE](#)

[Animal Welfare](#) / [New Contingency Planning Rule](#)

Animal Welfare

[Contact Us](#)

[About Animal Care](#)

[News and Announcements](#)

[I Want To...](#)

[Animal Welfare Act](#)

New Contingency Planning and Training of Personnel Rule (APHIS-2020-0101)

Last Modified: Jan 27, 2022

Print





Resources

<https://www.aphis.usda.gov/aphis/ourfocus/animalwelfare/climate-change/emergencies-and-awa-reg-facilities>

Climate-Change Related Emergencies and AWA Regulated Facilities

Last Modified: Jul 20, 2022



[Know Your Risks](#) | [General Recommendations for Regulated Facilities](#) | [More Information](#)

Weather-related and environmental threats that regulated facilities have always faced are becoming more frequent and extreme because of climate change. AWA-regulated facilities can plan for climate-related emergencies to safeguard the welfare of animals in their care and the resilience of their business.

Know Your Risks

✓ Drought

✓ Temperature extremes



Resources

<https://www.thenasaaep.com/>

<https://zahp.org/>

<https://avma.org/>

<https://zahp.org/secure-zoo/>

<https://www.nacanet.org/disaster-portal/>

<https://thenarsc.org/>

<https://www.ready.gov/>

<https://www.ready.gov/business>

<https://www.ncbi.nlm.nih.gov/books/NBK464307>



Questions?

Animal Care
animalcare@usda.gov

Chad Moore,
Transportation Field Specialist
chad.t.moore@usda.gov