

COWGEM



COLORADO WORKING GROUP EMERGENCY MANAGEMENT



Emergency Plan Library

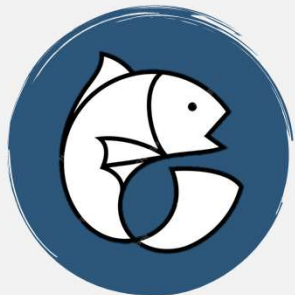




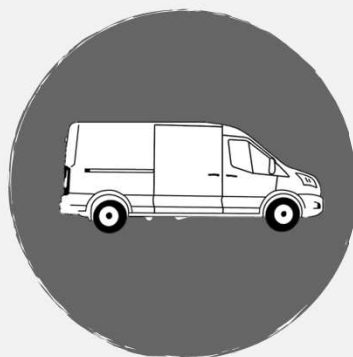
Contacts/Vendors



Crates



Grain/Food items



Vehicles and
Transportation
options

Group Inventories

The group maintains a collective list of items that can be easily accessed at any time.

What we do now

The COWGEM group has demonstrated that one of its greatest benefits is the cultivation of strong local relationships and leveraging them to solve common challenges faced by all our organizations.



Emergency Response

Attending each other's emergency training exercises as observers

The group has been activated three times since its formation: twice for fires near the Wolf and Wildlife Center, and once for a fire near Pueblo Zoo. On all three occasions, no aid was needed.

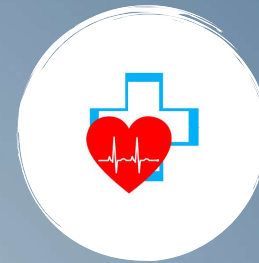


Rules and Regulations

Reviewing new AZA guidelines and implementation

Discussing the new USDA three-year inspection and criteria

Implementing USDA bird regulations



Animal health and welfare

Highly Pathogenic Avian Influenza (H5N1) preparedness plan



Strengths

Rapid Response:

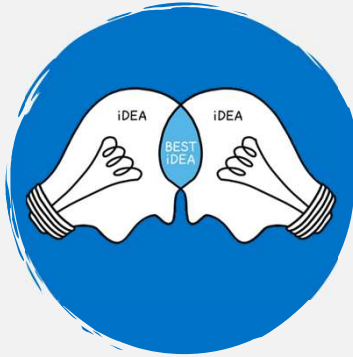
Regional support facilitates quick response to small-scale emergency events, ensuring timely assistance to affected institutions.

Resource Sharing:

Collaboration among local institutions allows for the sharing of resources, such as personnel, equipment, and expertise, enhancing overall response capabilities.

Coordination:

With a focused approach on small, contained events, regional support enables efficient coordination of efforts among participating institutions, minimizing duplication of tasks and maximizing effectiveness.



Collaboration

Efficient Response:

Collaborations enable institutions to pool their resources, such as personnel, expertise, and equipment, allowing for more efficient response to emergencies.

Relationship Building:

Collaborations in emergency management foster stronger relationships among institutions, promoting trust and facilitating future cooperation.



Limitations

Limited Scope:

Regional support may not be sufficient for larger-scale emergencies or those that extend beyond the immediate area, requiring additional resources and coordination from external agencies or organizations.

Dependency Risks:

Relying solely on regional support may create dependency among local institutions, potentially limiting their ability to respond independently in certain situations.

Resource Constraints:

Limited resources in small institutions may hinder their full participation in regional support initiatives.

Strengths And Limitations

Be prepared for any
emergency situation.

THANK YOU

Jeff Halter 

Vice President of Animal Care, Cheyenne Mountain Zoo

+719-424-7813 

jhalter@cmzoo.org 